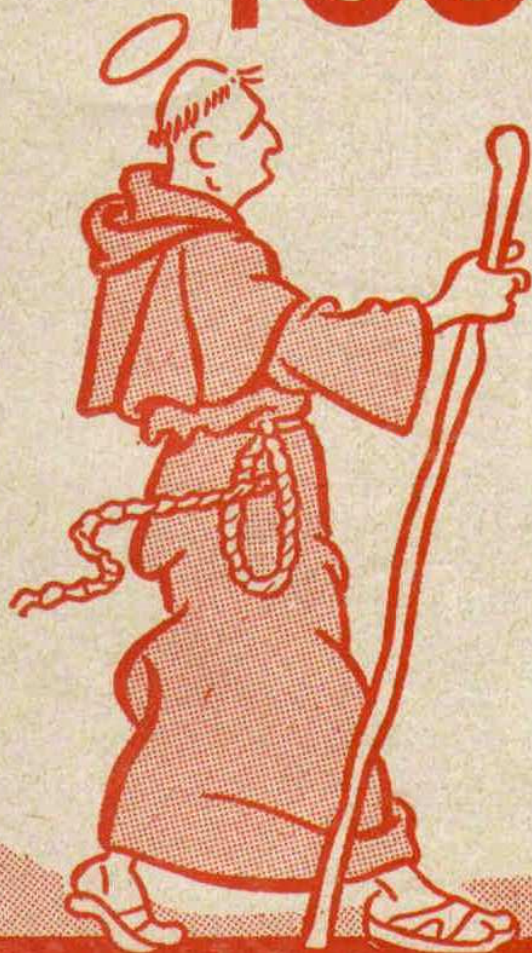


1116

3-11-2022

SOUTHAMPTON FOOTBALL CLUB

Founded
1885



**Official
PROGRAMME**

4^D

SOUTHAMPTON FOOTBALL AND ATHLETIC COMPANY LIMITED

Registered Offices and Ground — The Dell, Milton Rd. Southampton
Telephone — Southampton 23408

Patron

ADMIRAL OF THE FLEET THE EARL MOUNTBATTEN OF BURMA, K.G. P.C. G.C.B. G.C.S.I. G.C.I.E. G.C.V.O. D.S.O.

President H. G. BLAGRAVE

Vice-President R. J. STRANGER, C.B.E. M.C.

Directors

C. J. COSGROVE (Chairman)

J. H. G. BARBER (Vice-Chairman)

E. C. CHAPLIN

JOHN CORBETT

R. W. JUKES, J.P.

LT.-COL. G. D. MEYRICK, M.C.

G. E. H. PRINCE, O.B.E.

G. READER

LT. COL. T. H. REDDY

W. TOOMER

Hon. Consultant Surgeon
RAYMOND PURVIS, F.R.C.S.

Hon. Consultant Orthopaedic Surgeon
H. H. LANGSTON, F.R.C.S.

Hon. Medical Officer
DR. D. B. RAMSAY, M.B., CH.B.

Secretary H. F. DIDHAM

Team Manager E. T. BATES

Trainer J. GALLAGHER

ADMISSION PRICES

Numbered and Reserved Seats (bookable in advance) West Stand, Centre Block 6/6d.

Unreserved Seats (pay at turnstiles) East Stand, Centre Block 5/-; West Stand Wings 4/6;
East Stand Wings 4/-.

Standing; Enclosures 3/-, Ground 2/6 & 2/-, Boys 1/- (Stile 31).

Reserve Team Matches: Stands (all Sections) 1/6, Ground 1/- (Boys 6d).

THE SOUTHAMPTON ALBION BAND

Plays at all home matches

Commentaries of all first team matches are relayed to local hospitals
by members of Southampton Toc H.

FIRST AGAIN!

'BANKER' of the 'ECHO'
was the leading 1958/59
pools expert in Britain
for the second successive
year. — 'Southern
EVENING ECHO
&
'FOOTBALL ECHO'
KEEP YOU INFORMED

Contractors to Admiralty, Ministry of Works,
Air Ministry, Post Office, War Dept., etc.

R. F. WEBB LTD.

Electrical Installation Contractors



Head Office - Tel. 20215/6

8 ROCKSTONE PLACE
SOUTHAMPTON

SHOWROOMS :

45 JEWRY STREET, WINCHESTER

Tel. 3842

OPHTHALMIC OPTICIAN

Wm S. Dunn F.S.M.C.

75 PORTSWOOD ROAD
SOUTHAMPTON

TELEPHONE: 54474

HAMILTON ELECTRONICS (SOUTHAMPTON) **LTD.**

35 LONDON ROAD, SOUTHAMPTON. 28622

THE FINEST RADIO, T.V. and HI-FI SALES and SERVICE IN SOUTHAMPTON
FERGUSON and GRUNDIG DEALERS

OUR VISITORS



- | | | |
|-------------------|------|-------------------------------------------------------------------------------------------------------------------------------------------------------------------------------------|
| Walter Bingley | L.B. | Born in Sheffield. Signed in the early part of the 1958 season, making his league debut then for the 'Robins'. Walter came from Sheffield Wednesday, with Bolton previously. |
| Sam Burton | G. | Product of local football joining Swindon in 1945. Played for Wilts. junior eleven which reached final of Counties Tournament 1944-45. |
| Peter Chamberlain | R.B. | Became a Swindon player in 1957 coming from Leicester City. Peter also plays in the forward line. Born in Bootle. |
| Arnold Darcy | O.L. | Born at Blackburn, joining the 'Robins' from Wigan during 1956-57 season. Played as an amateur for Accrington Stanley in 1952-53 season. |
| Bob Edwards | I.F. | Last season highest goal-scorer. He joined the Town in 1956 from Chelsea. Born at Guilford. |
| John Hoskins | I.F. | Signed from Southampton during the close season, being at that Club for six years. |
| Ken Mellor | C.H. | Joined the 'Robins' during the close season from Mansfield Town. |
| Keith Morgan | R.H. | A teenager produced through the ranks of the 'Robins' youth teams. A County Youth player he made his debut last season playing a dozen league games. |
| John Richards | I.F. | Signed from the Army during 1957-58 season. A goal-scoring inside forward. A versatile forward, playing in all inside forward positions and right wing, last season top goalscorer. |
| Bob Woodruff | W.H. | A local lad who joined the 'Robins' from the Swindon Schoolboys team that did so well in the National Team schoolboys Cup. |

WE ARE THE PRINTERS OF THIS PROGRAMME

A. R. SIMMONS
& Company Limited



Every description of Sports Printing undertaken

Secretaries of Football and Sports Clubs Advised and Quotations gladly given

25/26 TERMINUS TERRACE - SOUTHAMPTON
Telephone 24921

BE "ON THE BALL"—

SECURE YOUR HOME FROM HILSONS

TOTTON Calmore Road

Semi-detached three bedroomed Houses £2,395

Detached three bedroomed Bungalows £2,350 & £2,495

BITTERNE Peartree Avenue

Detached three bedroomed Houses £2,750

£10 Deposit Secures.

95% Mortgages

Further particulars—

Messrs HILSON HOMES LIMITED

19 CARLTON CRESCENT SOUTHAMPTON

Telephone 27263

Garden Bargains!

- * Sodium Chlorate Weedkiller
1/6 per lb.
- * National Growmore Fertilizer
7lbs. 2/6
- * Bonemeal Flour
7lbs. 3/6
- * Flowering Shrubs
from 3/6
- * Fruit Trees
from 7/6

- * Bush Roses, 90 varieties
4/- each, 45/- per doz.
- * Standard Roses
12/6 & 14/6
- * Seed Potatoes, 15 varieties
cheaper this year
- * Catalogues of bulbs, seeds, or general
lists, free.

FRED LONGSTER LTD.

(Est. 1895)

28-30 LONDON ROAD

— SOUTHAMPTON

**Summerbees
Coaches Ltd.**



PULLMAN CAR HIRE SERVICE

Motor Tours Organising our Speciality



11/13 Lodge Road

SOUTHAMPTON

Telephone 54836 & 20086

CARLTON
BOOT
&



SHOE REPAIR SERVICE

Your Repairs can now be ready in 48 hours
Including Football Boots

18 CARLTON PLACE, SOUTHAMPTON
(opp. the Drill Hall)

SUPPORTERS WANTED

Back a home winner - Join your local T.A.
Royal Signals Unit. (10 Air Support Signal
Units TA) to learn a trade with pay as you
learn - Vacancies in all trades - Wireless
Operators, Radio Technicians, Clerks, Cooks,
Drivers.

Apply: (10 Air Support Signal Unit TA),
Blighmont T.A. Centre
Millbrook Road, Southampton.
Tele: Southampton 71479

PLAYERS' AUTOGRAPHS

SWINDON

Ken Miller

John H. Brown

Bill Arkime

Ed Hudson

J. Vautour

Willie Marshall

Ray Chandler

Peter Chamberlain

Daniel Young

Ken Morgan

Sam Bunter

Walter Dwyer

John Stephens

John H. Brown

Alan Haddock

1961

John H. Brown

COAL BUNKERS

Constructed of:-

PRE-CAST REINFORCED
CONCRETE UNITS

CAPACITY 10-15 CWTs.

Easily Erected



APPLY

THE BLOKCRETE COMPANY

LIMITED

MOUNT PLEASANT WHARF
SOUTHAMPTON

PHONE - 25061

Drink Or-Lem

FOR HEALTH
AND VIGOUR

Rich in
Vitamin 'C'
and Glucose too

Made from whole
Crushed sun-
ripened Oranges
and Lemons



Per Bottle 2/9
24 Drinks

the makers of

VIGORTONE

TRADE MARK

VITAMIN 'C'
BLACKCURRANT

3/3d per 13oz Bottle

TO LET

Apply Secretary,
Southampton F. C.
The Dell

BASTICKS

*The shop for men
whose clothes
must be good*

SOUTHAMPTON

136 ABOVE BAR

WINCHESTER

73 HIGH STREET

FROM THE BOARDROOM

NATURALLY WE were disappointed to lose our first home match this season against Bury, but on the afternoon's play there was never any doubt that the visitors were the better team. They had a very good defence and managed not only to prevent the Saints from scoring but also, by good midfield marking, to cut out the openings which might otherwise have enabled our forwards to come much more into the game. It was one of those games where our visitors were playing above their normal standard and we were 'one degree under'.

On Wednesday afternoon the Saints played on the Oakwell Ground for the first time since the 1952/3 season when both Barnsley and the Saints were relegated from the Second Division. It wasn't a very happy return for after having much the better of the game we left both points behind. We had twenty-five shots against Barnsley's seventeen, and we had eight corners against Barnsley's two. The Barnsley goal had several narrow escapes but there was no doubt that it was a game we should have won comfortably. Young Bob Charles was playing at Oakwell for the second time in his brief playing career—his first appearance was when he played for the Southampton Schools' Team against Barnsley Schools in the final of the English Schools Shield four years ago. Bob at least had a happy return visit for I thought he had a very good game—positioning himself well, handling confidently and kicking a very good length. The Saints defence held the Barnsley forwards quite comfortably for most of the game. The winning goal was 'just one of those things'; the Barnsley centre forward Tindill shot from about twenty yards—a hard drive going well wide but it happened to find Baxter who hit it in the net. Although the Saints forwards kept trying to the end they just couldn't manage to score.

JOHN BARBER (Vice-Chairman)

LEAD A TEAM INTO ACTION

Specialised training is now being organised for men suitable for appointment as leaders in the Headquarters and Warden Sections of

THE CIVIL DEFENCE CORPS.

Get details from C.D.H.Q., 15, Hulse Road.

B. FRENCH LTD.

36 London Rd., Southampton
TELEPHONE 21098

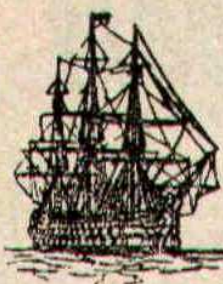
AND

37B Victoria Rd., Woolston
TELEPHONE 47531

Your Southampton Specialists
FOR

*T.V., Radio, Cleaners and
Washing Machines*

Authorised Hoover Dealer



TRANSPORT - STORAGE - DISTRIBUTION

Phone - Rownhams 461 (6 lines)

Warehouses at Rownhams, Southampton
and at Hythe (for Bulk Storage)

VICTORY TRANSPORT LTD.

Registered Office

Rownhams House, Rownhams, Southampton

FIXTURES LIST 1959/60

1959	Football League Div. 3	F	A	Gate	1959	Combination Div. 1	F	A	Gate
Aug. 22	NORWICH	H	2 2	22,581	Aug. 22	Tottenham	A	0 4	
24	Chesterfield	A	2 3	8,740	29	CHARLTON	H	3 2	2,655
29	Brentford	A	2 2	15,740	Sept. 5	Bristol	A	1 3	
Sept. 2	CHESTERFIELD	H	4 3	15,266	12	LEICESTER	H	0 4	2,336
5	COLCHESTER	H	4 2	14,704	19	Southend	A	2 4	
7	Port Vale	A	1 1	13,853	26	WEST HAM	H	5 1	2,470
12	Southend	A	4 2	10,692	Oct. 3	Chelsea	A		
16	PORT VALE	H	3 2	17,009	10	Portsmouth	A		
19	MANSFIELD	H	5 2	15,831	17	ARSENAL	H		
23	SHREWSBURY	H	6 3	19,172	24	Brighton	A		
26	Halifax	A	1 3	12,163	31	SWANSEA	H		
28	Shrewsbury	A	1 1	8,370	Nov. 7	Ipswich	A		
Oct. 3	BURY	H	0 2	4,549	14	LUTON	H		
7	Barnsley	A	0 1		21	Leyton O.	A		
10	SWINDON	H			28	BOURNEMOUTH	H		
14	BARNLSLEY	H			Dec. 5	Arsenal	A		
17	York	A			12	PORTSMOUTH	H		
24	COVENTRY	H			19	TOTTENHAM	H		
31	Accrington	A			26				
Nov. 7	Q.P.R.	H			1960				
14	[1]				Jan. 2	Charlton	A		
21	WREXHAM	H			9				
28	Tranmere	A			16	BRISTOL CITY	H		
Dec. 5	[2]				23	Leicester	A		
12	Bradford C.	A			30				
19	Norwich	A			Feb. 6	SOUTHEND	H		
26	NEWPORT	H			13	West Ham	A		
28	Newport	A			20	CHELSEA	H		
Jan. 2	BRENTFORD	H			27	BRIGHTON	H		
1960 9	Grimsby [3]	A			Mar. 5	Swansea	A		
16	Colchester	A			12	IPSWICH	H		
23	SOUTHEND	H			19	Luton	A		
30	BOURNEMTH [4]	H			26	LEYTON O.	H		
Feb. 6	Mansfield	A			Apr. 2	Bournemouth	A		
13	HALIFAX	H			9	BIRMINGHAM	H		
20	Bury [5]	A			15	Birmingham	A		
27	Swindon	A			16				
Mar. 5	YORK	H			23	NOTTINGHAM	H		
12	Coventry [5]	A			30	Nottingham	A		
19	TRANMERE	H			May 7				
26	Q.P.R. [S.F.]	A							
Apr. 2	GRIMSBY	H							
9	Wrexham	A							
15	Reading	A							
16	ACCRINGTON	H							
18	READING	H							
23	Bournemouth	A							
30	BRADFORD CITY	H							
May 7	[Final]								

Continental Football Boots

were introduced to British Clubs by

TOOMER'S SPORTS HOUSE

THE FOOTBALL BOOT SPECIALISTS

19 LONDON ROAD, SOUTHAMPTON. Tel. 23694

Match No. 8

SATURDAY, OCTOBER 10th. 1959

Kick-off 3.00 p.m.

SOUTHAMPTON v. SWINDON TOWN

FOOTBALL LEAGUE DIVISION 3

SOUTHAMPTON

Colours: RED and WHITE STRIPED SHIRTS—BLACK KNICKERS

CHARLES

DAVIES
2

TRAYNOR
3

CONNER
4

PAGE
5

HUXFORD
6

PAINE
7

O'BRIEN
8

REEVES
9

MULGREW
10

SYDENHAM
11

Referee

Mr. S. YATES
of Bristol



Linesmen

Mr. C. R. Poulter
(Red Flag)

Mr. A. J. Sturgeon
(Yellow Flag)

HOSKINS
11

GAULD
10

RICHARDS
9

EDWARDS DARC
8 7

WOODRUFF
6

MELLOR
5

MORGAN
4

BINGLEY
3

CHAMBERLAIN
2

BURTON

SWINDON TOWN

Colours: BLUE SHIRTS, & WHITE KNICKERS

NEXT HOME MATCH

Wednesday, October 14th at 7.30 p.m.

Football League Div. 3

BARNSELY

Usual prices

TEAM MANAGER'S NOTES

AFTER OUR recent home form, last Saturday's set back from Bury came as a big disappointment, but against a strong all round side, we seldom got in the game forward, and with the Bury half back line dominating the centre of the field, we were beaten by a better side on the day.

At Barnsley, we played some good football in the first half, creating many chances, but our finishing was poor, and we subsequently paid the penalty for this, for, in the second half with the Barnsley outside left off the field, we could do little right. After stealing a quick goal they packed their defence with 9 men, and in spite of several close shaves, we could not break it down, finding it far more difficult playing against ten men than we had against eleven.

Although beaten by a strong Chelsea side by 2-0 at Stamford Bridge, our Reserve boys acquitted themselves well, particularly in defence.

With the end of the hectic two games a week period in sight, we have lost our early consistency, and with the defence tightening up, we are running into forward problems. We must keep working to get the correct team balance necessary for success.

E. T. BATES.

OUR JUNIORS

WELL WE got through our 1st Round Match in the F.A. Youth Cup—after a struggle! Our lads were most disappointing in the first half, but staged a grand second half rally and were worthy winners.

The Youth team will be on view again on Monday, October 19th, when we play Reading in the 1st round of the Southern Junior Floodlit Cup Kick-off 7.30.

**SUNDAY
EXPRESS
COVERS
ALL
HAMPSHIRE
SPORT!**

JACK E. WINSTONE
SOUTHAMPTON BUILDERS LIMITED

Office and Works
98a MACNAGHTEN ROAD, BITTERNE PARK,
Tel: So'ton 27626

New Houses and Bungalows to suit all at:-

ESTATE OFFICE C/F 2967

PEVERELLS WOOD ESTATE
MAIN WINCHESTER ROAD
CHANDLERS FORD

SUPPORTERS' CLUB NOTES

SOUTHAMPTON FOOTBALL SUPPORTERS'

SOCIAL CLUB

AFTER THE MATCH . . .

*COME TO OUR CLUB AND HAVE A CONVIVIAL
EVENING — FULLY LICENSED*

E. C. ROGERS, Hon. Gen. Secretary.

**LEARN TO DANCE
AT THE
PEARL BROWN SCHOOLS OF DANCING**

10 SPRING CRESCENT, PORTSWOOD, SOUTHAMPTON. — TELEPHONE 54192 & 57174
Absolute Beginners Classes Principal: Pearl Brown Special Class for Over 30's
Children's Ballroom Classes The Hants, Sussex & Dorset Professional Ballroom Champion 1958, & fully qualified male and female staff Private Lessons
Teenage Classes

Work and play the T.A. way, with pay . . .

JOIN YOUR LOCAL REGIMENT
T.A. CENTRE, 32 CARLTON PLACE, SOUTHAMPTON, HANTS.

Call, write or 'phone for more information whether you have previous experience or not

5th BATTALION, THE ROYAL HAMPSHIRE REGIMENT T.A.

Telephone: So'ton 25028 & 25029

APPEARANCES & GOALSCORERS

1st XI

	App.	Goals
Godfrey	11	
Davies, R.	13	
Huxford	13	2
Page	13	1
Conner	13	1
Paine	13	4
O'Brien	13	7
Reeves	13	15
Mulgrew	13	3
Sydenham	13	2
Kennedy	2	
Traynor	11	
Charles	2	

2nd XI

	App.	Goals
Clifton	7	1
Davies, E.	6	
Murray	7	1
Heaney	6	
Holmes	5	
Maughan	7	4
McLean	4	
Womack	7	2
Penzer	6	
Harrison	7	2
Wilson	3	
Simpson	5	1
Scurr	3	
Kennedy	3	
Charles	1	
Pring	3	2

SPOTLIGHT

BOB CHARLES



ALTHOUGH HE will not be 18 until Boxing Day, Southampton-born Bob Charles, the youngest goalkeeper in the League today, has already seen quite a bit of Europe on his soccer travels.

In the Spring of this year he won his first England Youth cap against East Germany at Zwickau and later collected three more at the International Youth Tournament in Bulgaria.

After playing a major part in the Town team's success in the England Schools Trophy two seasons ago — he made his schoolboy international debut against Wales at Swansea and a month later played for England against Germany in Stuttgart.

With acknowledgements to the "Football Echo."

A Brand New Morris Minor from

ONLY
PER DAY

15/-



Comprehensive Insurance Included Free!

SWAN SELF-DRIVE LTD.

Telephone 27373

24 hour service - - 33 Carlton Crescent

CARTER & FINMORE LTD.

ONSLOW ROAD, SOUTHAMPTON.

Telephone 25567/9 Day and Night

Announce their 5 Star Winter Programme

- ★ Domestic Refrigerators-Many at end of season prices-Saving up to £10
 - ★ Commercial Refrigeration - Enquires without obligation
 - ★ "Cascade" Spin Driers £30/9/-
 - ★ "Dish master" Washing up Machine
 - ★ Easy terms on all purchases - from as little as 10% Deposit
- Available on SEVEN
DAYS FREE TRIAL



THE NEW GARAGE

(PROPRIETORS: H. HOLDEN & SON LTD)

**WESTERN ESPLANADE
SOUTHAMPTON**

**CAR SALES
SELF DRIVE
HIRE**

**Telephone: 22009
24-Hour Service**

**ALL
ESSO PRODUCTS
ESSO LUBRICATION
SERVICE**

A. W. JEFFREYS

IRON GATES & BALUSTRADING
OF ALL DESCRIPTIONS

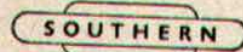
WELDING and GENERAL
METALWORK

Contractors to Local Authorities and
leading Architects and Builders

DUKES ROAD, SOUTHAMPTON
Telephone: 57724

HOME or AWAY
you cannot do better than
TRAVEL BY TRAIN

Cheap tickets are issued to South-
ampton from most surrounding
stations. Watch this space for
details of excursions arranged for
certain future "away" fixtures.



CLASSIC TYPEWRITERS LTD.

*All makes of New Portable and Standard
Typewriters available*

12 - 18 - 24 months to pay

New Adding and Listing Machines from £31 10 0d.

Reconditioned Machines from £10
12 months to pay

REPAIRS - OVERHAULS - HIRE

4 SHIRLEY ROAD, SOUTHAMPTON
Tele: 21801

Plate Glass
Window Glass

Beveling

Grinding

& Polishing

ST. MARY'S GLASS

(W. G. BABIDGE)

Glass Specialist

65½ St. Mary's Road
Southampton

Resilvering
Mirrors
4 day service

Car Headlining
Specialist

Pillion Seat
Specialist

**SUPPORTERS—Why not back a Home
Winner by joining your local Territorial
Army ROYAL SIGNALS Unit.**
310 SIGNAL SQUADRON T.A.
(AIR SUPPORT SIGNAL UNIT)
BLIGHMONT T.A. CENTRE MILLBROOK ROAD
SOUTHAMPTON

Vacancies for trained and trainees in Wireless Oper-
ating, also Clerks, Cooks, Drivers etc. Ages 17½ to 45.
For full details of pay etc 'phone So'ton 71479

FOOTBALL LEAGUE DIV. 3

Up to and including October 5th, 1959

	P.	W.	D.	L.	F.	A.	P.
Q.P.R.	14	8	4	2	24	8	20
Halifax	14	8	4	2	21	14	20
Coventry	14	7	5	2	25	11	19
Norwich	14	8	3	3	28	16	19
Swindon	13	8	2	3	25	18	18
Shrewsbury	14	7	3	4	35	25	17
Southampton	13	6	4	3	35	28	16
Bury	13	7	1	5	18	10	15
Grimsby	14	5	5	4	32	22	15
Bournemouth	13	7	1	5	24	23	15
Newport	13	6	3	4	20	20	15
Barnsley	13	5	3	5	19	17	13
York	13	4	5	4	17	17	13
Bradford C.	13	5	2	6	24	24	12
Brentford	13	4	4	5	23	23	12
Colchester	13	5	2	6	27	29	12
Tranmere	14	4	3	7	23	19	11
Port Vale	13	5	1	7	16	29	11
Southend	14	4	2	8	16	31	10
Reading	13	2	4	7	26	30	8
Chesterfield	12	4	0	8	19	28	8
Accrington	13	2	3	8	14	35	7
Wrexham	12	2	2	8	15	29	6
Mansfield	13	1	4	8	17	37	6

HAMPSHIRE LEAGUE DIV. 1

Up to and including October 3rd, 1959

	P.	W.	D.	L.	F.	A.	P.
Portsmouth 'A'	8	5	1	2	15	6	11
Gosport Boro' Ath.	6	4	0	2	10	10	8
Andover	5	3	1	1	11	6	7
Boscombe 'A'	4	3	0	1	8	3	6
Newport	4	3	0	1	11	9	6
Salisbury	7	2	2	3	16	21	6
Basingstoke Town	4	1	3	0	11	8	5
Sandown	7	2	1	4	13	14	5
Alton Town	6	0	5	1	10	11	5
Netley Sports	6	2	1	3	9	12	5
Fareham Town	4	1	2	1	9	10	4
Southampton 'A'	5	2	0	3	6	9	4
Cowes	4	0	2	2	5	9	2
Winchester City	6	1	0	5	11	17	2

FOOTBALL COMBINATION DIV. 1

Up to and including October 3rd, 1959

	P.	W.	D.	L.	F.	A.	P.
Tottenham	7	6	0	1	22	6	12
Arsenal	8	6	0	2	23	11	12
Brighton	9	3	5	1	18	13	11
Chelsea	7	5	0	2	21	8	10
Leyton Orient	8	3	4	1	12	8	10
Leicester	9	4	1	4	17	11	9
Bournemouth	7	2	4	1	9	10	8
Bristol City	7	3	1	3	14	13	7
Portsmouth	7	3	1	3	19	18	7
Ipswich	7	3	1	3	14	18	7
West Ham	7	3	1	3	11	18	7
Charlton	7	3	0	4	10	19	6
Birmingham	7	2	1	4	20	15	5
Luton	7	1	3	3	14	17	5
Notts Forest	7	2	1	4	10	17	5
Southend	7	2	1	4	7	21	5
Southampton	7	2	0	5	11	20	4
Swansea	7	0	2	5	6	15	2

HAMPSHIRE LEAGUE DIV. 2

Up to and including October 3rd, 1959

	P.	W.	D.	L.	F.	A.	P.
Christchurch	6	5	0	1	20	5	10
Reading 'A'	7	5	0	2	25	10	10
East Cowes Vics.	7	4	2	1	23	10	10
Sholing Sports	7	4	1	2	17	17	9
Waterlooville	4	4	0	0	18	5	8
Swaythling Ath.	6	3	2	1	15	10	8
Totton	4	3	0	1	11	10	6
B.R. Eastleigh	5	2	1	2	11	8	5
Thornycroft Ath.	6	2	1	3	18	19	5
Andover Res.	8	1	2	5	15	26	4
De Havilland	4	1	1	2	7	7	3
Pirelli-General	4	1	1	2	7	16	3
Ryde Sports	7	1	1	5	9	29	3
Cowes Res.	6	1	0	5	15	21	2
Lymington	4	0	2	2	5	13	2
Blackfield & Lang.	5	0	2	3	7	17	2

HALF-TIME SCOREBOARD

A Barnsley York C.	J Reading Chesterfield	R Man. U. Arsenal
B Brentford Tranmere	K Shrewsbury T. Newport C.	S Newcastle U. Notts. F.
C Bury Coventry C.	L Southend U. Grimsby T.	T Preston N. E. Man. C.
D Colchester Wrexham	M Birmingham Sheffield W.	U Tottenham H. Wolves
E Halifax T. Bradford C.	N Burnley Blackpool	V W.B.A. Fulham
F Mansfield Q. P. R.	O Chelsea Bolton W.	W West Ham U. Luton T.
G Norwich C. Bournemouth	P Leeds U. Everton	X Derby County Portsmouth
H Port Vale Accrington S.	Q Leicester Blackburn R.	Y Liverpool Brighton



STAN WARD
IS HERE
TO SEE THIS MATCH

Read his full Commentary
in Sunday's

NEWS OF THE WORLD



Mayfair . . .
. . . Restaurant

9 Commercial Road
SOUTHAMPTON

FOR THE BEST
LUNCHES · TEAS · SUPPERS
QUICK SERVICE

Telephone 23120

GOODENOUGH (Sot'on) Ltd.

42 BEDFORD PLACE
Telephone 25739



Sole Stockists of

HARDY AMIES
Mens Wear

by

RADIAC

● BE PARTICULAR! ASK DEFINITELY FOR

FEATHERY FLAKE
THE QUALITY

Self Raising Flour

IT'S WELL WORTH WHILE!



WATNEYS

**Ales and
Stouts**

